

3D Modeling of Effluent Treatment Plant (ETP)

(PDS)

Key Features

Technology:

PDS
MicroStation
Navisworks

Duration:

The project was completed in 10 months

Deliverables:

1. Isometric drawings
2. Consolidated MTO (in Excel) – Piping and Structural
3. Piping GA drawings
4. Final 3D model
5. Updated As-Built Drawings

The Client

A leader in water technology market holds global market share of 14%. They offer services in the areas of municipal and industrial water & wastewater treatment. They have consolidated its' specialist reputation through a number of innovative and path-breaking projects in the fields of water treatment and wastewater recycling.

The Business Need

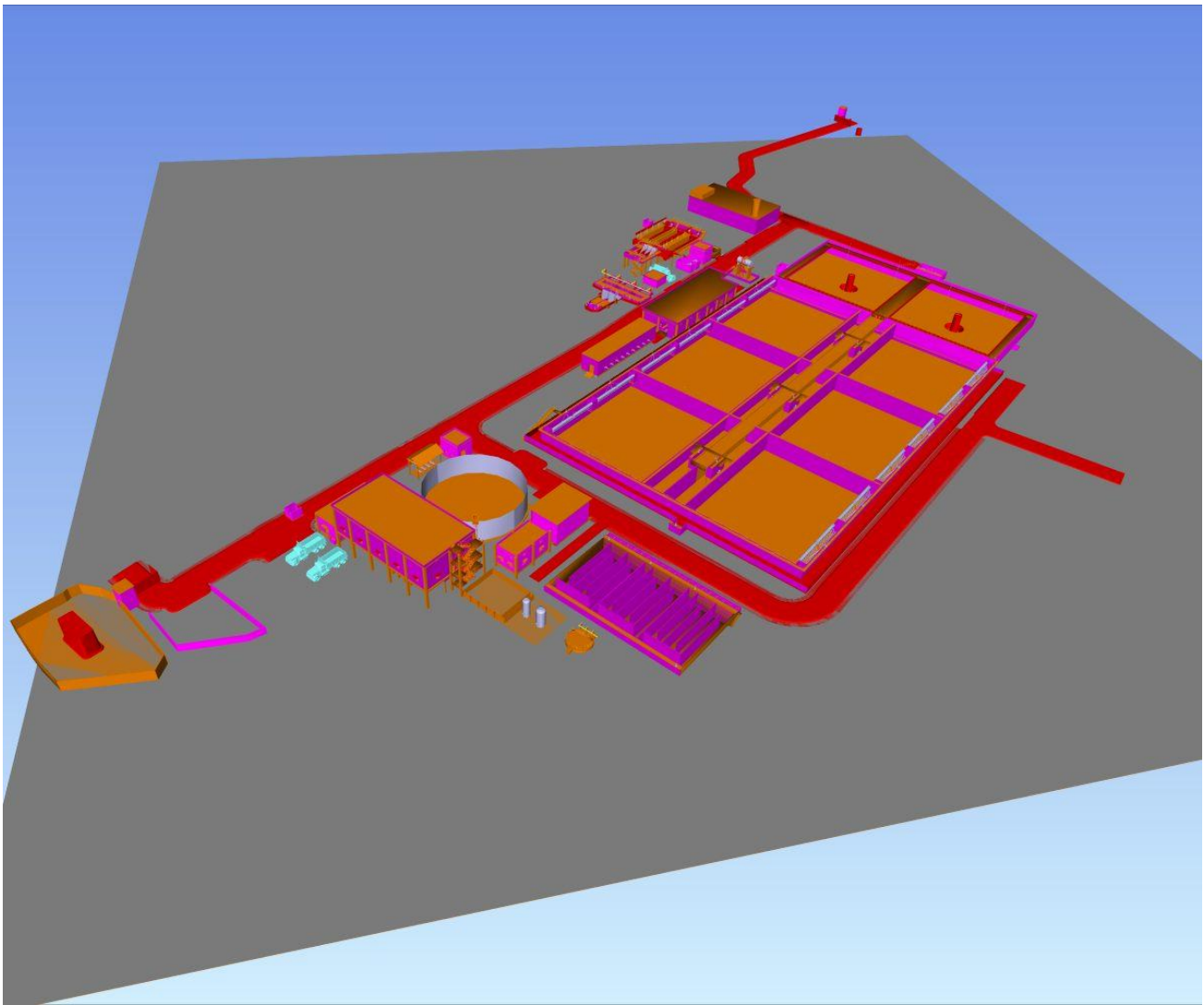
The client required the below business needs:

- PDS Administration including spec. writing (Approx-15 Spec) and customization of special items
- Modeling -
 - i. Roads, pavements and storm water drains, process drains and interface junctions, culverts, pits
 - ii. Equipment modeling
 - iii. Equipment foundations / Structure / Structural platforms / Ladders / Railing / Manholes / Envelopes
 - iv. Structural modeling
 - v. Physical support modeling as per support standards
 - vi. Cable Trays (Electrical & Instrumentation)
 - vii. Instruments, Junction boxes, Air manifolds, SOV boxes, Local Control Panels with supports
 - viii. Motors and PBS with canopy
 - ix. Electrical JBs and DBs, Column or wall mouter electrical supplies, Earthing / Lighting pit location
 - x. Electrical structural supports
- As-Built Modeling / Drafting

Rishabh's Solution

Rishabh's Engineering completed the PDS & 3D Modeling of Effluent Treatment Plant within 10 months with a team of 7 members including 1 team leader.

ASME B31.3 codes and standards were followed to ensure higher quality in delivering PDS & 3D Modeling.



Technology Used

- 3D Modeling – PDS
- 2D Drawings – MicroStation
- Review Software – Navisworks

Key Deliverables

- Isometric drawings (in Microstation .dgn format)
- Consolidated MTO (in Excel) – Piping and Structural
- Extracted Piping GA drawings from model (in Microstation .dgn format)
- Final 3D model after completion of project work
- Clash Check Reports
- Updated As-Built Drawings

Contact Details

US Ph : +1-201-484-7302, 1-877-RISHABH (747-4224)

UK Ph : +44-0207 993 8162

Email : sales@rishabheng.com

Twitter : www.twitter.com/RishabhEng

Linkedin : www.linkedin.com/company/rishabh-engineering-services

More information about Rishabh Engineering, please visit:

www.rishabheng.com | www.rishabhsoft.com | www.rishabhbpo.com

About Rishabh Engineering

Rishabh Engineering provides multidisciplinary engineering support services to EPC companies in industries like Oil and Gas, Petrochemical, Power and Water treatment. Our parent company, Rishabh Software is a CMMI level-3, ISO9001 and ISO27001 company that provides services in Software Development, Business Process Outsourcing (BPO) and Engineering Services Outsourcing (ESO) to clients globally. Rishabh has offices in USA, UK and India with their main delivery center in Vadodara, India.