

Checking Of Engineering Drawings

(Piping Isometrics, Arrangements, General Arrangement)

Key Features

Technology:

CADWorx

AutoCAD

Navisworks

Duration:

The project was completed in 5 weeks

Deliverables:

1. 550+ Drawings Checked
2. Checked Piping Isometrics
3. Checked Piping Support Drawings
4. Checked General Arrangement Drawings

The Client

A world leader in providing water and wastewater treatment solutions for both the public and private sectors. They offer single source for design, manufacturing of equipment, plant construction, commissioning and operation for all types of water and wastewater treatment facilities.

The Business Need

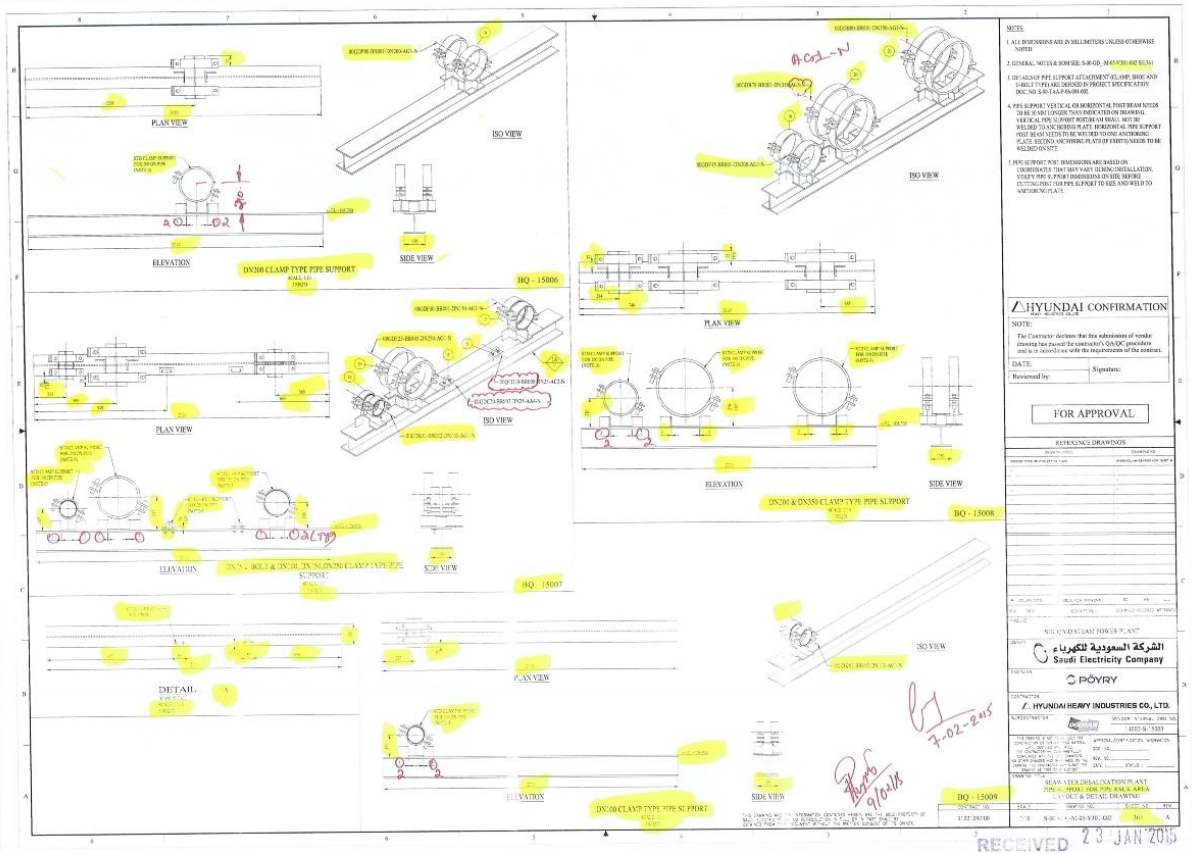
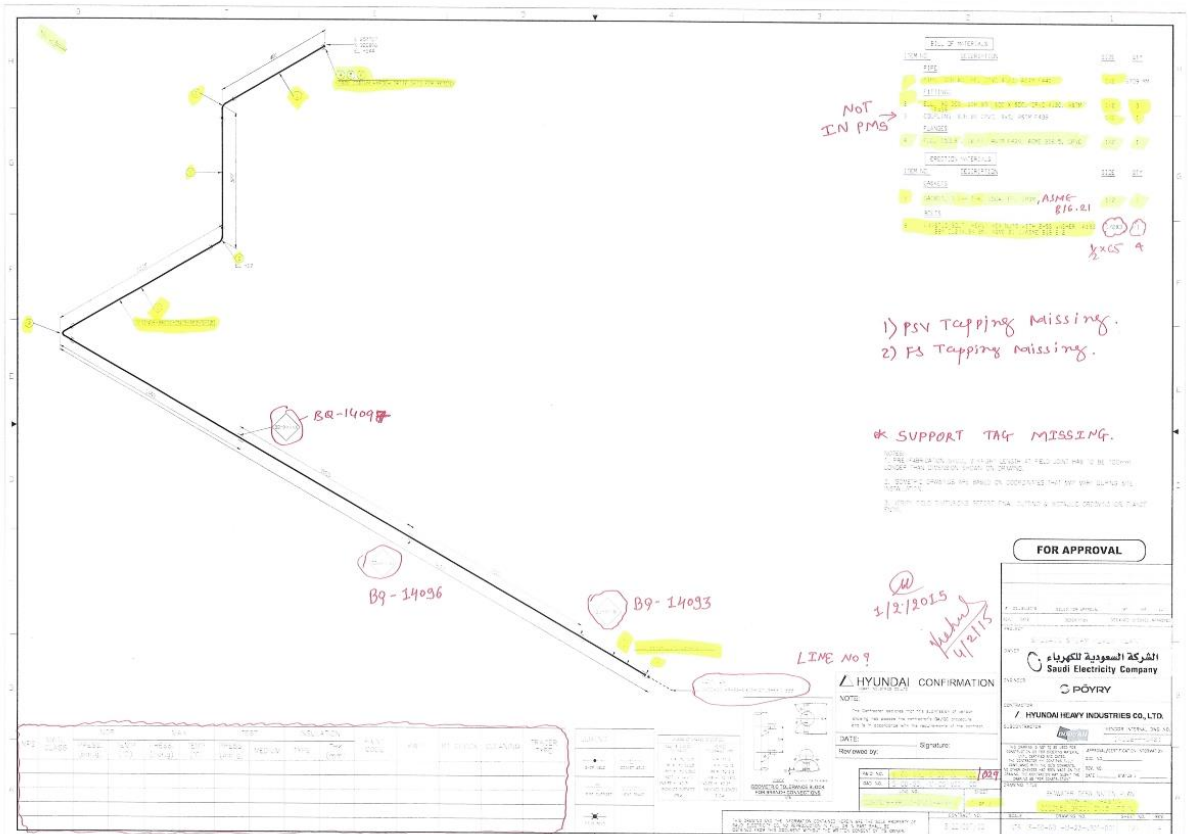
The client required the below business needs:

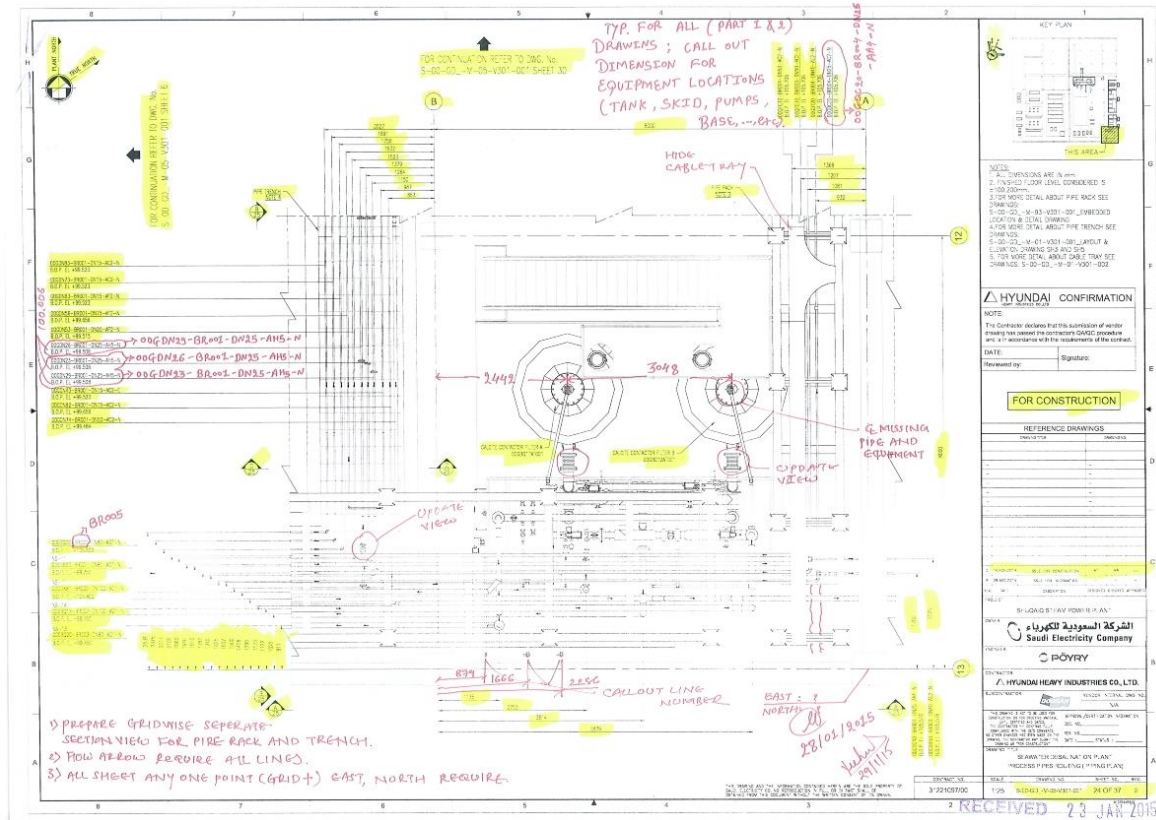
- Cross-checking of General Arrangement drawings
- ISO Fabrication Drawings and Pipe support drawings before issuing to fabricators
- To check piping line numbers, pipe support tag numbers and equipment tag numbers in GA's drawings
- Piping components and BOM in piping fabrication drawings
- Pipe support components and BOM in piping supports fabrication drawings

Rishabh's Solution

Rishabh's Engineering completed the checking of drawings within 5 weeks with a team of 5 members.

ASME B31.3 codes and standards were followed to ensure higher quality in checking of drawings





Technology Used

- 3D Modeling – CADWorx
- 2D Drawings – AutoCAD
- Review File to be delivered in .NWD (Navisworks)

Key Deliverables

- 550+ Drawings Checked
- Checked Piping Isometrics
- Checked Piping Support Drawings
- Checked General Arrangement Drawings

Contact Details

US Ph : +1-201-484-7302, 1-877-RISHABH (747-4224)

UK Ph : +44-0207 993 8162

Email : sales@rishabheng.com

Twitter : www.twitter.com/RishabhEng

Linkedin : www.linkedin.com/company/rishabh-engineering-services

More information about Rishabh Engineering, please visit:

www.rishabheng.com | www.rishabhsoft.com | www.rishabhbpo.com

About Rishabh Engineering

Rishabh Engineering provides multidisciplinary engineering support services to EPC companies in industries like Oil and Gas, Petrochemical, Power and Water treatment. Our parent company, Rishabh Software is a CMMI level-3, ISO9001 and ISO27001 company that provides services in Software Development, Business Process Outsourcing (BPO) and Engineering Services Outsourcing (ESO) to clients globally. Rishabh has offices in USA, UK and India with their main delivery center in Vadodra, India.