

Generation of 2D Piping Spool Drawings and As-Built Isometric Drawings

Key Features

Technology:

AutoCAD 2015

Intergraph CADWorx

Duration:

The project was completed in 1 week

Deliverables:

1. Spool Drawings in .dwg Format and .pdf Format
2. BOM Table
3. Summarised BOM For All Batches
4. As-Built Isometric Drawings in .dwg Format

The Client

A Singapore based leader in engineering services associated with infrastructure development and GIS data in global markets. They provide services in vast markets including oil & gas, petrochemical, water & wastewater treatment, industrial solutions, real estate and more.

The Business Need

The client required Rishabh Engineering to produce piping spool fabrication drawings in .dwg format from isometric drawings.

Rishabh's Solution

Rishabh Engineering provided its engineering services to execute generation of 2D piping spool drawings and as-built isometric drawings for:

- Revising the affected isometric drawings and cloud with the changes for ease of tracking
- Produce spool fabrication drawings using the existing piping layout
- Checking isometric drawing in Intergraph CADWorx and make as-built drawings of them

Rishabh Engineering successfully executed the project using Intergraph CADWorx and Autodesk AutoCAD, thus completing the project in 1 week with a team of 8 members (including 1 team lead) and followed as per standard engineering codes and standards ASME B31.3, BS EN ISO-14692. The total number of spool drawings were 230.

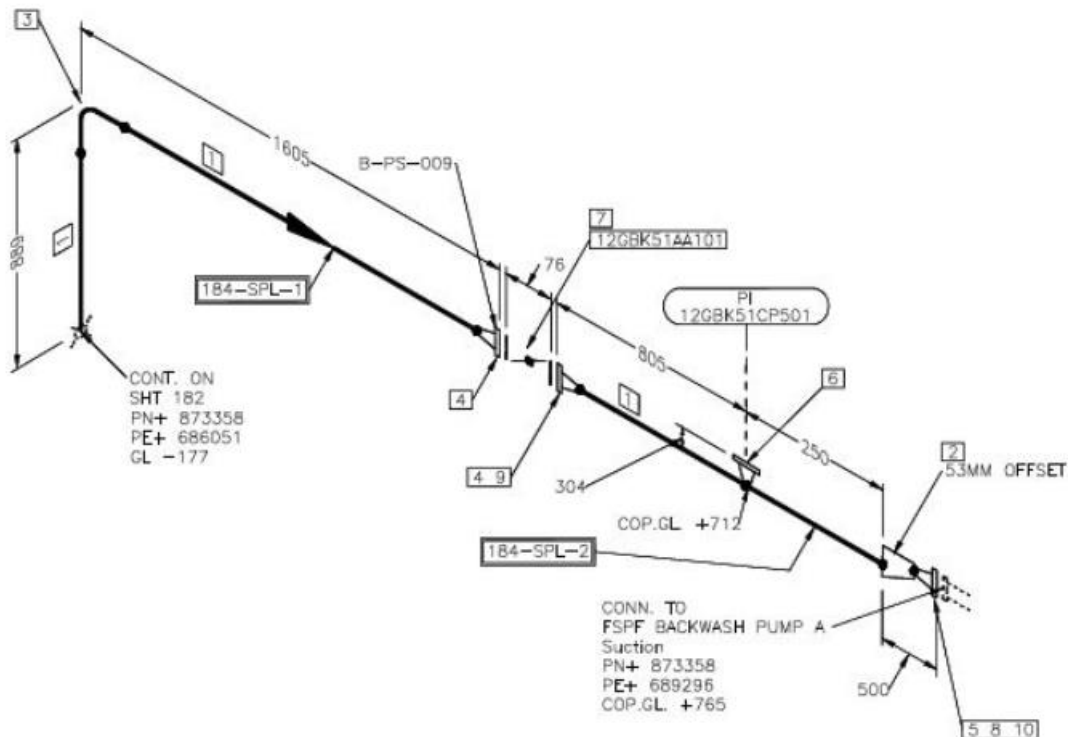
Spool Drawings:

Batch No.	No. of Spool Drawings
Batch 3	88
Batch 4	15
Batch 5	36
Batch 6	49
Batch 7	42

Project Execution Methodology

The project was executed in the following time line flow for 1 week:

Activity	Day 1	Day 2	Day 3	Day 4	Day 5	Day 6	Day 7
Isometric Corrections	█						
Spool Drawing Generation			█				
Summarization of BOM							█



Generation of 2D Piping Spool Drawings and As-Built Isometric Drawings

Technology Used

- AutoCAD 2015
- Intergraph CADWorx

Key Deliverables

- Spool drawings in .dwg format (AutoCAD) and .pdf format (NTS copies)
- BOM table
- Summarized BOM for all batches
- As-built isometric drawings in .dwg format

Contact Details

US Ph : +1-201-484-7302, 1-877-RISHABH (747-4224)

UK Ph : +44-207 993 8162

Email : sales@rishabheng.com

Twitter : www.twitter.com/RishabhEng

Linkedin : www.linkedin.com/company/rishabh-engineering-services

More information about Rishabh Engineering, please visit:

www.rishabheng.com | www.rishabhsoft.com | www.rishabhbpo.com

About Rishabh Engineering

Rishabh Engineering provides multidisciplinary engineering support services to EPC companies in industries like Oil and Gas, Petrochemical, Power and Water treatment. Our parent company, Rishabh Software is a CMMI level-3, ISO9001 and ISO27001 company that provides services in Software Development, Business Process Outsourcing (BPO) and Engineering Services Outsourcing (ESO) to clients globally. Rishabh has offices in USA, UK and India with their main delivery center in Vadodara, India.