

As-built Documentation - Public Transportation & Tele-Communication Facility

Key Features

Technology:

AutoCAD 2015

Duration:

The project was completed in 2 months

Deliverables:

1. Final updated drawings of public transportation & tele-communication facilities

The Client

A leading systems integration organization dealing with infrastructure technology for 20+ years & cater private and public sectors. They are involved right from conceptual design, implementation and maintenance of tele-communications, electrical, IT and intelligent commutation & security systems. The products and services provided by them include: specifications development, systems design, project management, installation, and thorough support and maintenance of systems implemented.

The Business Need

The client required drawing updates (Approx. 150) after incorporating their comments on red line marked up drawings using standard drafting procedures & checklists. The scope of work was covered for below public transportation & telecommunication networks:

- Federal Center Metro Station (Total 20 Metro Stations)
- Chemical Sensor Replacement Area
- Rail Yard Hardening Region

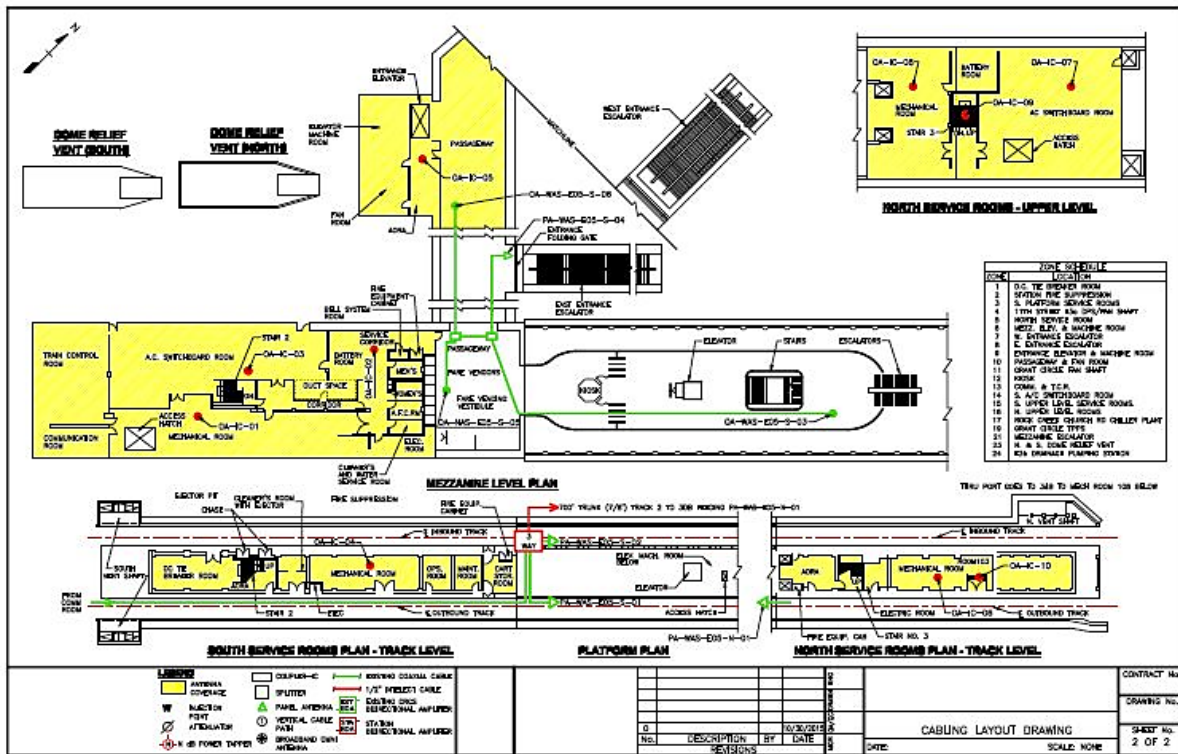
Rishabh's Solution

Rishabh Engineering was appointed for as-built updation work for Federal public transportation facilities. The overall scope consisted of below listed varieties of Layouts/Diagrams:

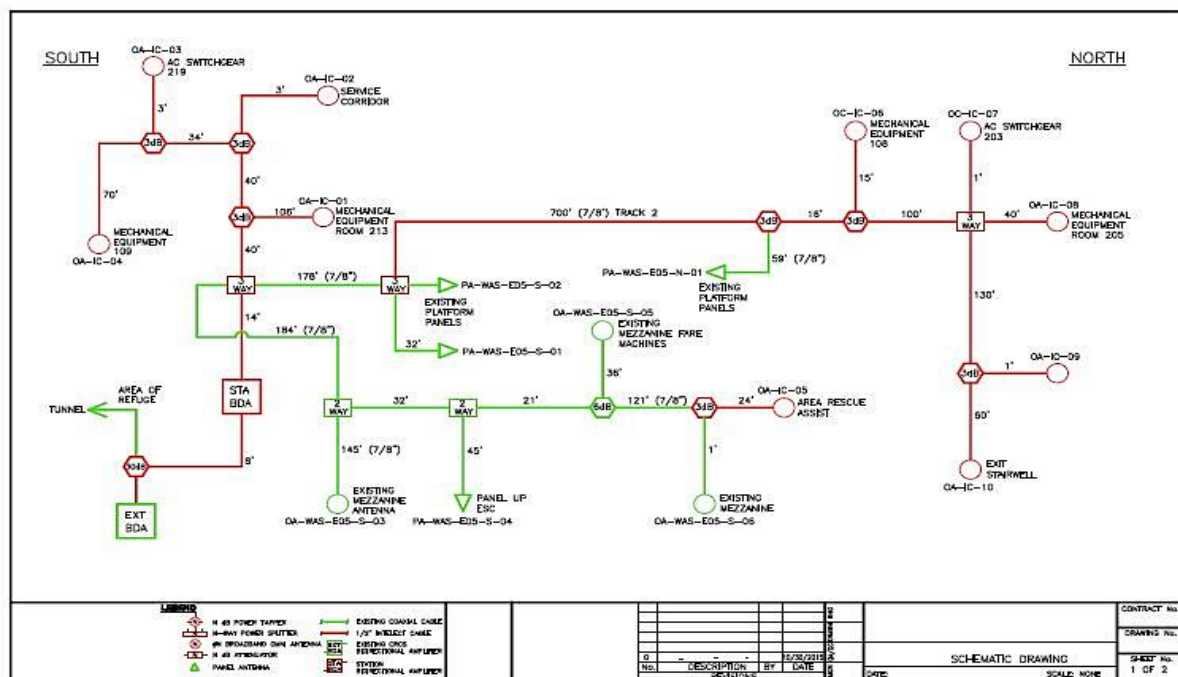
- System Maps & Index
- Site Plans
- Cabling Layouts
- Schematic Diagrams
- System Diagrams
- Equipment Layouts

- Layout Diagrams
- Structural layouts (Floor Plan, Stairs, Platforms etc.)
- Wiring Diagrams
- Conduit Plans
- Electrical Panel Drawings
- Equipment Block Diagrams
- Security Camera Mounting Diagrams
- Security Equipment Plan

The project was planned to be completed within 2 months & it was completed in time. A team of 5 members (including 1 team leader) successfully carried out this project.



As built updation – Cabling Layout Drawing



As built updation – Schematic Drawing

Technology Used

- 2D Drawings – AutoCAD 2015

Key Deliverables

- Final updated drawings

Contact Details

US Ph : +1-201-484-7302, 1-877-RISHABH (747-4224)

UK Ph : +44-0207 993 8162

Email : sales@rishabheng.com

Twitter : www.twitter.com/RishabhEng

Linkedin : www.linkedin.com/company/rishabh-engineering-services

More information about Rishabh Engineering, please visit:

www.rishabheng.com | www.rishabhsoft.com | www.rishabhbpo.com

About Rishabh Engineering

Rishabh Engineering provides multidisciplinary engineering support services to EPC companies in industries like Oil and Gas, Petrochemical, Power and Water treatment. Our parent company, Rishabh Software is a CMMI level-3, ISO9001 and ISO27001 company that provides services in Software Development, Business Process Outsourcing (BPO) and Engineering Services Outsourcing (ESO) to clients globally. Rishabh has offices in USA, UK and India with their main delivery center in Vadodara, India.