

3D Modeling – Pilot Plant for a UK based University

Key Features

Technology:

Intergraph CADWorx
Autodesk Navisworks

Duration:

The project was completed in 1 month

Deliverables:

1. 3D Model

The Client

A UK based engineering company specializing in delivering turnkey solutions to industry and academia. They also supply bespoke laboratory-scale equipment, skid mounted rigs and pilot plants used for research and development, process scale-up or production purposes.

The Business Need

The client required 3D model of a pilot plant that would serve as a training rig for undergraduate students in the university. The client also required support to undertake the 3D model including a continuous agitated reactor, coarse and fine filtration units, carbon dioxide absorption and heat recovery units.

Rishabh's Solution

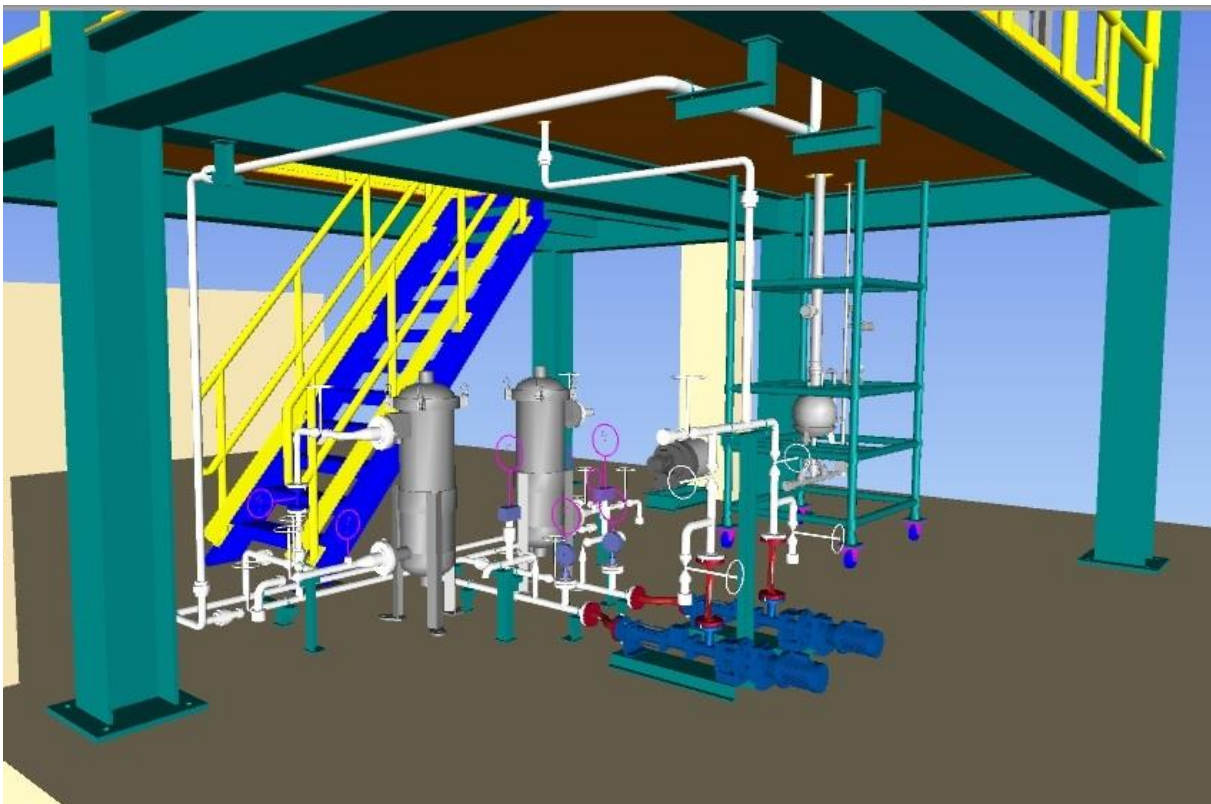
Rishabh Engineering was appointed to deliver the 3D modeling for the pilot plant in a span of 1 month. The following equipment were modeled as a part of the project:

- Screw Pump
- BAG Filter
- Scrubber Unit
- Agitator
- Heat Exchanger
- Header Tank
- Insulated Cylinder

ASME B31.3 codes and standards were followed to deliver high quality in 3D modeling.



3D Modeling – Pilot Plant



3D Modeling – Pilot Plant

Technology Used

- 3D modeling software – Intergraph CADWorx 2015
- Review Software- Autodesk Navisworks

Key Deliverables

- Intelligent 3D Model
- 3D model included a continuous agitated reactor, coarse and fine filtration units, carbon dioxide absorption and heat recovery units.

Contact Details

US Ph : +1-201-484-7302, 1-877-RISHABH (747-4224)

UK Ph : +44-0207 993 8162

Email : sales@rishabheng.com

Twitter : www.twitter.com/RishabhEng

Linkedin : www.linkedin.com/company/rishabh-engineering-services

More information about Rishabh Engineering, please visit:

www.rishabheng.com | www.rishabhsoft.com | www.rishabhbpo.com

About Rishabh Engineering

Rishabh Engineering provides multidisciplinary engineering support services to EPC companies in industries like Oil and Gas, Petrochemical, Power and Water treatment. Our parent company, Rishabh Software is a CMMI level-3, ISO9001 and ISO27001 company that provides services in Software Development, Business Process Outsourcing (BPO) and Engineering Services Outsourcing (ESO) to clients globally. Rishabh has offices in USA, UK and India with their main delivery center in Vadodara, India.