

# 3D Modeling of Onshore Operational Oil Plant

(PDS, MicroStation, Navisworks)

## Key Features

### Technology:

Intergraph PDS

Bentley MicroStation V8

Navisworks Manage

### Duration:

The project was completed in 1 month

### Deliverables:

1. Effective on-time delivery of committed 3D Models

## The Client

A Dubai-based diversified multinational group who operates in the areas of engineering and construction, infrastructure development and management, exploration of hydrocarbons, and mining of minerals/metals for the energy sector. They are also involved in trading activities and quick service restaurants. .

## The Business Need

The client required the below business needs:

- Equipment modeling
- Vessels
- Flow Suction Tank
- Pumps
- Launcher / Receiver
- Glycol Regeneration Unit
- Manifolds
- Piping modeling
- Packages -
  - i. Tank Flare Package
  - ii. HP Flare Package
  - iii. Oil Export Fiscal Package
  - iv. Biocide Injection Package
  - v. Effluent Water Treatment Package
- Structure -
  - i. Pipe rack, sleepers
  - ii. Crane, Fence
  - iii. Platform
  - iv. Skid
- Civil -
  - i. Road Modeling (Existing, Gatch , Asphalt)
  - ii. Pump house Foundation

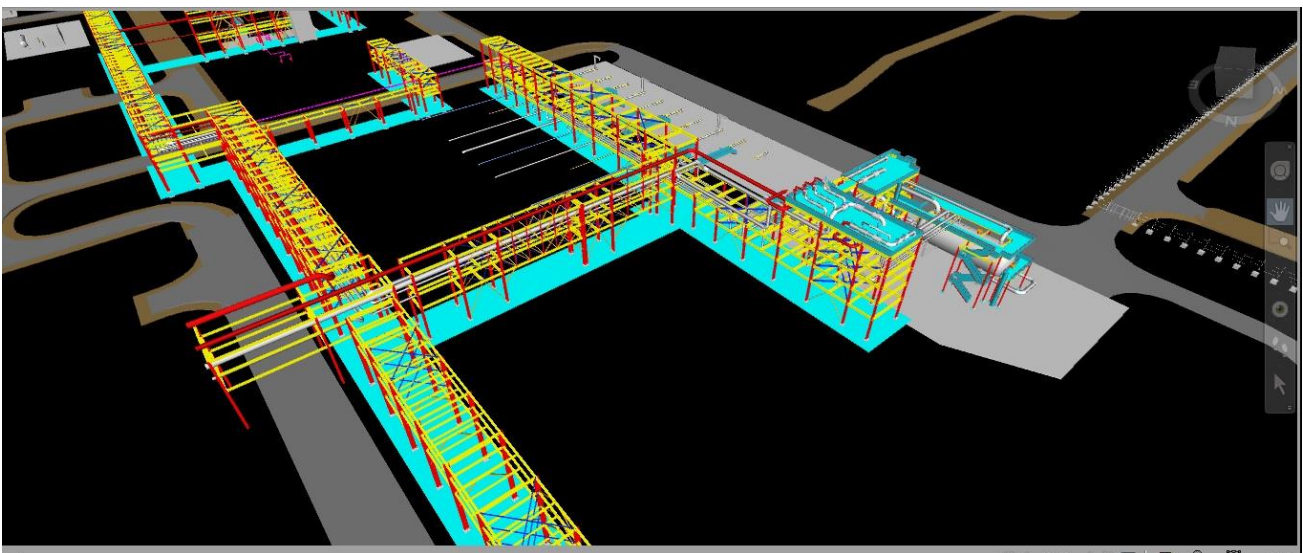
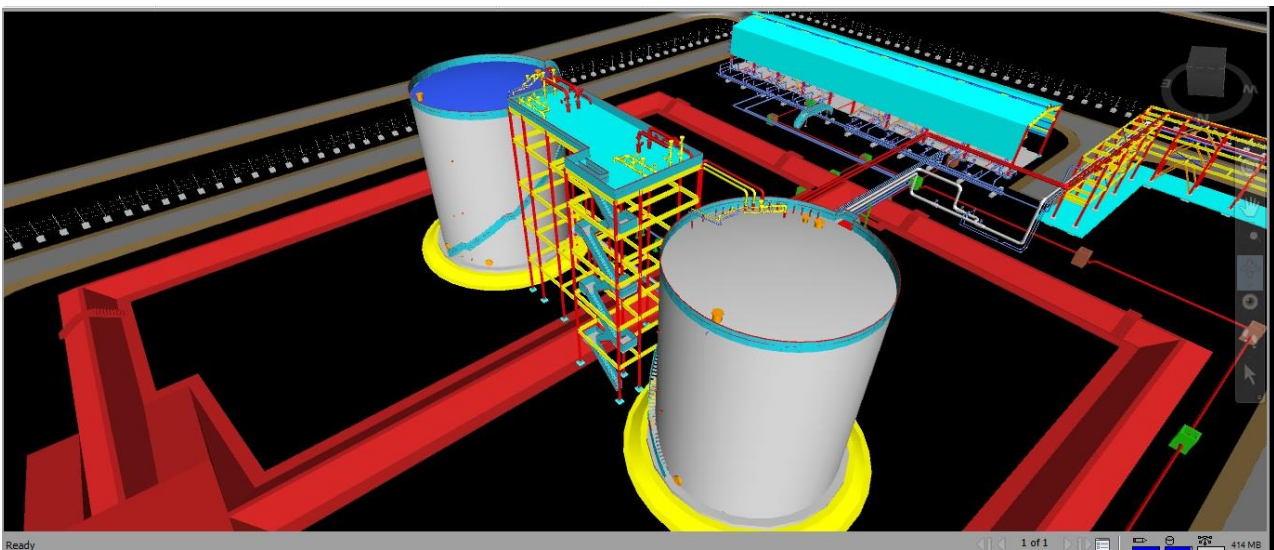
## Rishabh's Solution

Rishabh Engineering completed 3D Modeling on PDS of Onshore Oil Operational Plant in a short time frame of a month with a team of 10 members including 1 team leader.

ASME B31.3 codes and standards were followed to ensure higher quality in delivering 3D Modeling on PDS.

We also received an appreciation email from client and got the opportunity to complete the remaining model at client site.

*"Thanks for you and your team for providing me extreme support to achieve the target. It is an outstanding work by your team. Thank you for pulling everyone/everything together to reach the committed date."*



## Technology Used

- 3D Modeling – Intergraph PDS 8.0
- 2D Drawings – Bentley MicroStation V8
- Review Software – Navisworks Manage

## Key Deliverables

- Effective on-time delivery of committed 3D Models

### Contact Details

US Ph : +1-201-484-7302, 1-877-RISHABH (747-4224)

UK Ph : +44-0207 993 8162

Email : [sales@rishabheng.com](mailto:sales@rishabheng.com)

Twitter : [www.twitter.com/RishabhEng](http://www.twitter.com/RishabhEng)

Linkedin : [www.linkedin.com/company/rishabh-engineering-services](http://www.linkedin.com/company/rishabh-engineering-services)

More information about Rishabh Engineering, please visit:

[www.rishabheng.com](http://www.rishabheng.com) | [www.rishabhsoft.com](http://www.rishabhsoft.com) | [www.rishabhbpo.com](http://www.rishabhbpo.com)

### About Rishabh Engineering

Rishabh Engineering provides multidisciplinary engineering support services to EPC companies in industries like Oil and Gas, Petrochemical, Power and Water treatment. Our parent company, Rishabh Software is a CMMI level-3, ISO9001 and ISO27001 company that provides services in Software Development, Business Process Outsourcing (BPO) and Engineering Services Outsourcing (ESO) to clients globally. Rishabh has offices in USA, UK and India with their main delivery center in Vadodara, India.