

# 20,000+ Drawing Update for Global Petrochemical Complex

(As-built engineering update)

## Key Features

### Technology:

Bentley MicroStation V8  
AutoCAD

### Duration:

The project was completed in 6 months

### Deliverables:

1. Updated drawings on MicroStation & AutoCAD
2. Complex Red Mark updates through raster to vector conversion

## The Client

A global leader in project management, engineering & consulting offering services to Oil & Gas industries and building infrastructure projects. They are experts in buildings, oil, gas, petrochemical, chemical, and power systems industries.

## The Business Need

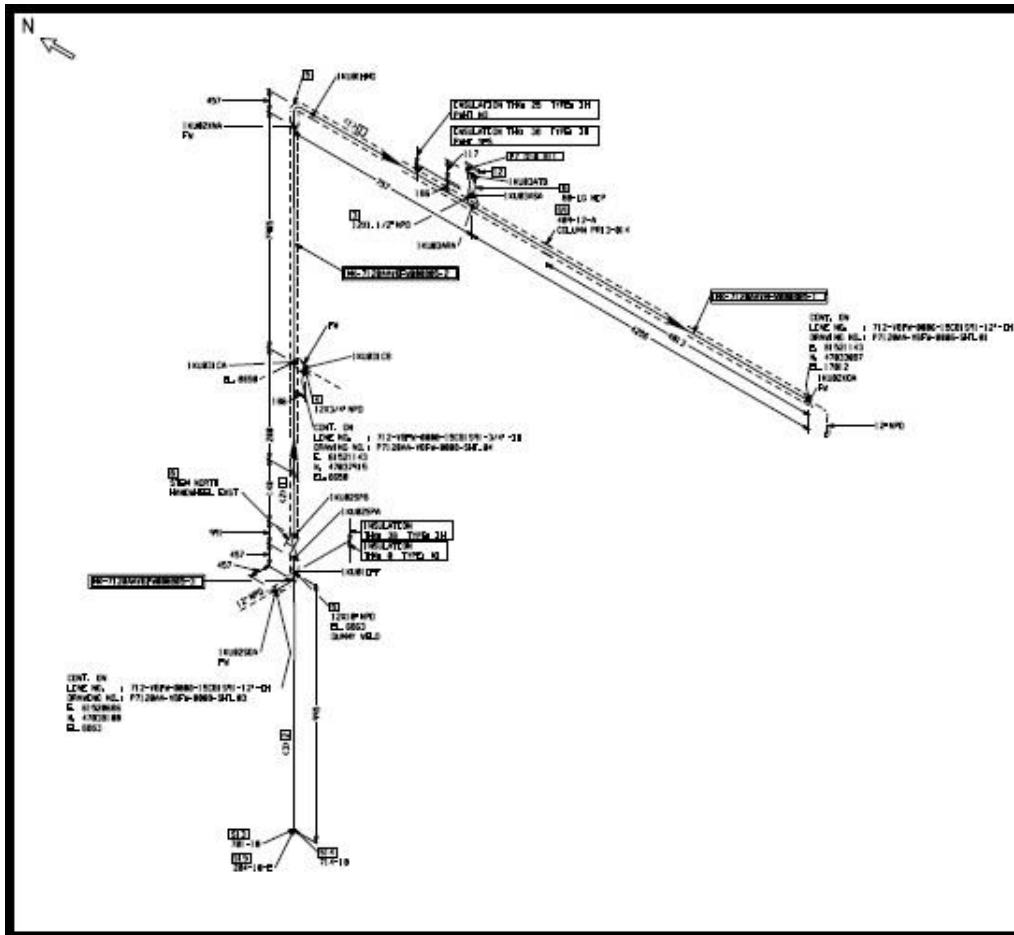
The client requested an update of drawings categorized to cover the following engineering disciplines:

- Plot plans
- GA drawings
- Isometrics
- Equipment drawings
- Electrical & Instrumentation equipment lists
- Cable trays
- Platforms & ladders
- Civil & Structural foundations
- Utilities blocks
- Data sheets for all disciplines
- Hazardous classification areas

## Rishabh's Solution

Rishabh's Engineering completed the As-built documentation and updated 20,000+ drawings in 6 months with a team of 14 members (12 Drafting Personnel + 2 Engineers).

Our team targeted 3000+ drawings per month using ASME B31.3 codes and standards to ensure higher quality in delivering of drawing.



## Technology Used

- Bentley MicroStation V8
- AutoCAD

## Key Deliverables

- Updated Drawings on MicroStation & AutoCAD
- Complex Red Mark update through raster to vector conversion

## Contact Details

US Ph : +1-201-484-7302, 1-877-RISHABH (747-4224)  
 UK Ph : +44-0207 993 8162  
 Email : [sales@rishabheng.com](mailto:sales@rishabheng.com)  
 Twitter : [www.twitter.com/RishabhEng](http://www.twitter.com/RishabhEng)  
 LinkedIn : [www.linkedin.com/company/rishabh-engineering-services](http://www.linkedin.com/company/rishabh-engineering-services)

More information about Rishabh Engineering, please visit:  
[www.rishabheng.com](http://www.rishabheng.com) | [www.rishabhsoft.com](http://www.rishabhsoft.com) | [www.rishabhbpo.com](http://www.rishabhbpo.com)

## About Rishabh Engineering

Rishabh Engineering provides multidisciplinary engineering support services to EPC companies in industries like Oil and Gas, Petrochemical, Power and Water treatment. Our parent company, Rishabh Software is a CMMI level-3, ISO9001 and ISO27001 company that provides services in Software Development, Business Process Outsourcing (BPO) and Engineering Services Outsourcing (ESO) to clients globally. Rishabh has offices in USA, UK and India with their main delivery center in Vadodara, India.