

PDMS of Ethylene Cracking Unit

(3D Modeling)

Key Features

Technology:

PDMS

AutoCAD

Navisworks

Duration:

The project was completed in 2 months

Deliverables:

1. 3D Model at different stage for review (30%, 60% & 90%)
2. Final 3D Model
3. Sample Isometrics and Gas

The Client

A global leader in the gases and engineering sector. It's Engineering division supports customers with planning, development and building turn key business solutions for industrial plants across sectors such as chemicals and petrochemicals, fertilizers, refining and pharmaceuticals.

The Business Need

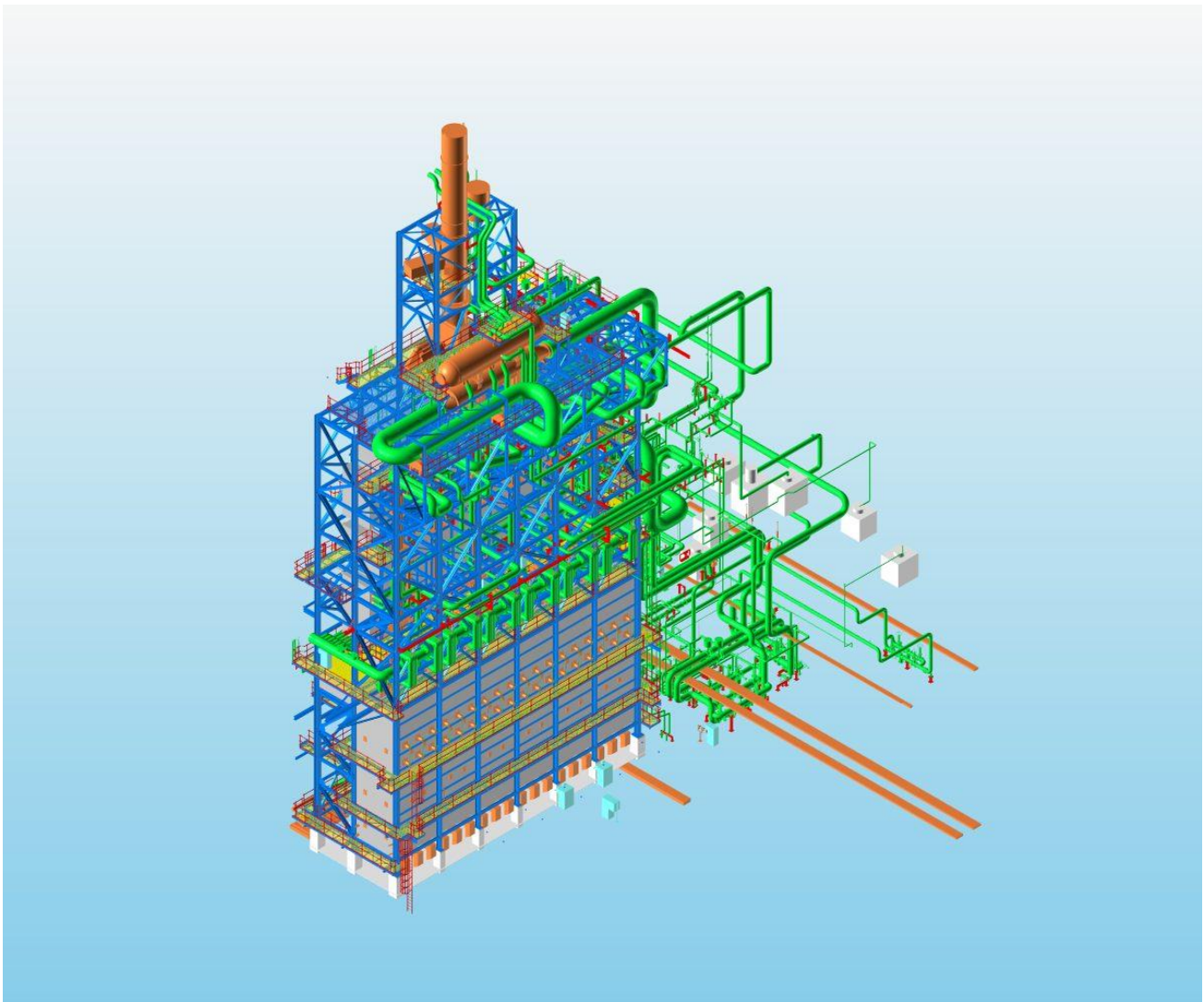
The client required the below business needs:

- PDMS administration
- Equipment modeling – Furnace & 10 equipment
- Modeling of equipment foundations / Structural platforms / Ladders / Manholes / Envelopes
- Piping designing and modeling in PDMS
- Structural modeling
- Physical support modeling
- Modeling of E&I cable trays
- Modeling of instruments and electrical equipment's

Rishabh's Solution

Rishabh's Engineering completed the PDMS & 3D Modeling of Ethylene Cracking Unit within 2 months with a team of 5 members including 1 team leader.

ASME B31.3 codes and standards were followed to ensure higher quality in delivering PDMS & 3D Modeling.



Technology Used

- 3D Modeling – PDMS
- 2D Drawings – AutoCAD 2009
- Review Software – Navisworks

Key Deliverables

- 3D Model at different stage for review (30%, 60% & 90%)
- Final 3D Model
- Sample Isometrics and Gas

Contact Details

US Ph : +1-201-484-7302, 1-877-RISHABH (747-4224)

UK Ph : +44-0207 993 8162

Email : sales@rishabheng.com

Twitter : www.twitter.com/RishabhEng

Linkedin : www.linkedin.com/company/rishabh-engineering-services

More information about Rishabh Engineering, please visit:

www.rishabheng.com | www.rishabhsoft.com | www.rishabhbpo.com

About Rishabh Engineering

Rishabh Engineering provides multidisciplinary engineering support services to EPC companies in industries like Oil and Gas, Petrochemical, Power and Water treatment. Our parent company, Rishabh Software is a CMMI level-3, ISO9001 and ISO27001 company that provides services in Software Development, Business Process Outsourcing (BPO) and Engineering Services Outsourcing (ESO) to clients globally. Rishabh has offices in USA, UK and India with their main delivery center in Vadodara, India.